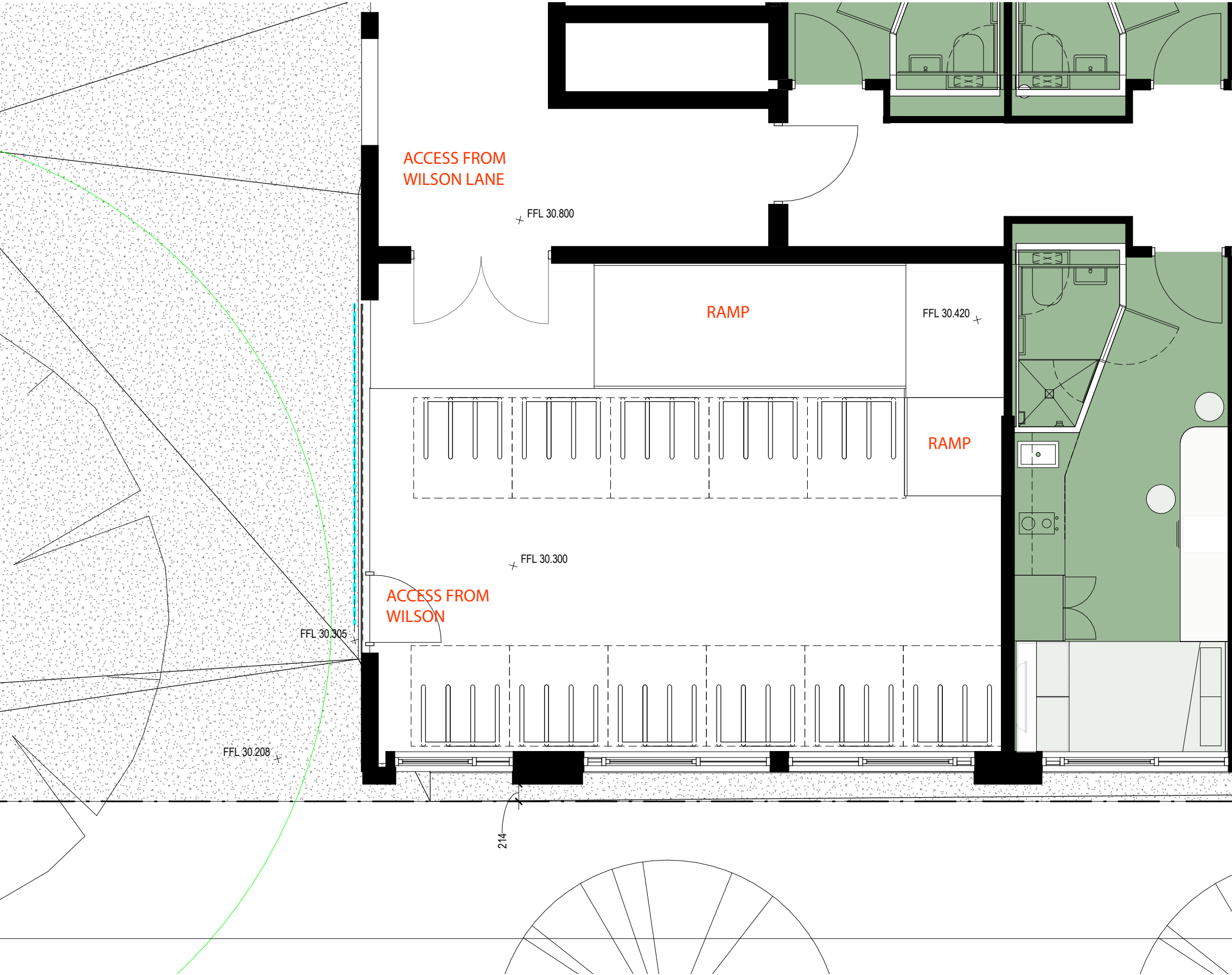


6. BIKE STORAGE

6. BIKE STORAGE



Extract of Ground Floor Plan - Bike Store (scale 1:50@A3)

6. BIKE STORAGE



View from Wilson Street into proposed bike store



Example of bike storage system

The bike store is located on Wilson Steet addressing the entry court and reception. The bike store is also located with direct visual and physical connetcion to the secondary entry of Wilson Lane.

The bike store is securely connected within the development. Utilising a steel framed system, as per the photographs on the left, storage for 44 bikes (1 per 5 residents in compliance with the DCP) is provided whilst maintaing clear lines of sight throughout.

7. VERTICALITY

7. VERTICALITY



Precedent imagery



Precedent imagery



Verticality expressed in brick recesses to mimic terraces houses



Verticality expressed in entrance building

The current proposal is significantly lower in height along the streetscape than the original DA submission and as such there is less obvious verticality.

To compensate elements within the elevation have been amended to emphasis the vertical rhythm of terrace houses.

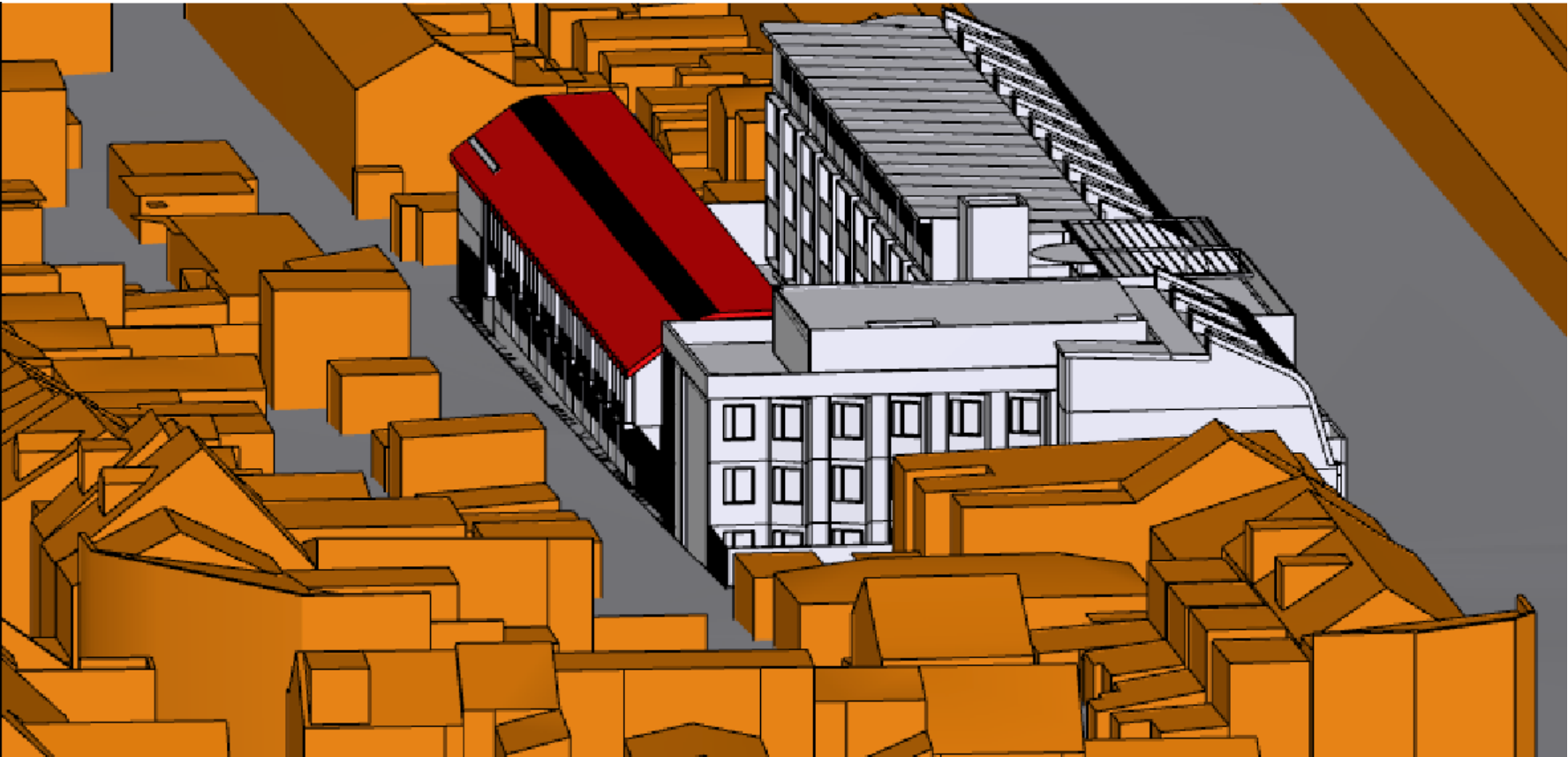
Generally there are two design approaches within the proposal. The first is applied to the elements that follow the street alignment. These elements take rhythm and proportion clues from the existing terraces along the street. The second approach applies to the building elements which shift from the street alignment to accommodate trees and setbacks. These secondary elements use a simplified vertical rhythm to provide a backdrop for the terrace elements and trees.

The terrace elements, aligned to the street use engaged piers as vertical dividers similar to the historical terrace party wall. Between the 'party walls' the proportion of the 'balcony' elements have been altered to provide a more vertical reading. Infill panels, or spandrels, below the ground floor window emphasis the vertical reading of the 'party walls' and this rhythm of brick base with engaged piers and recessed elements is inspired by the Carriageworks wall opposite.

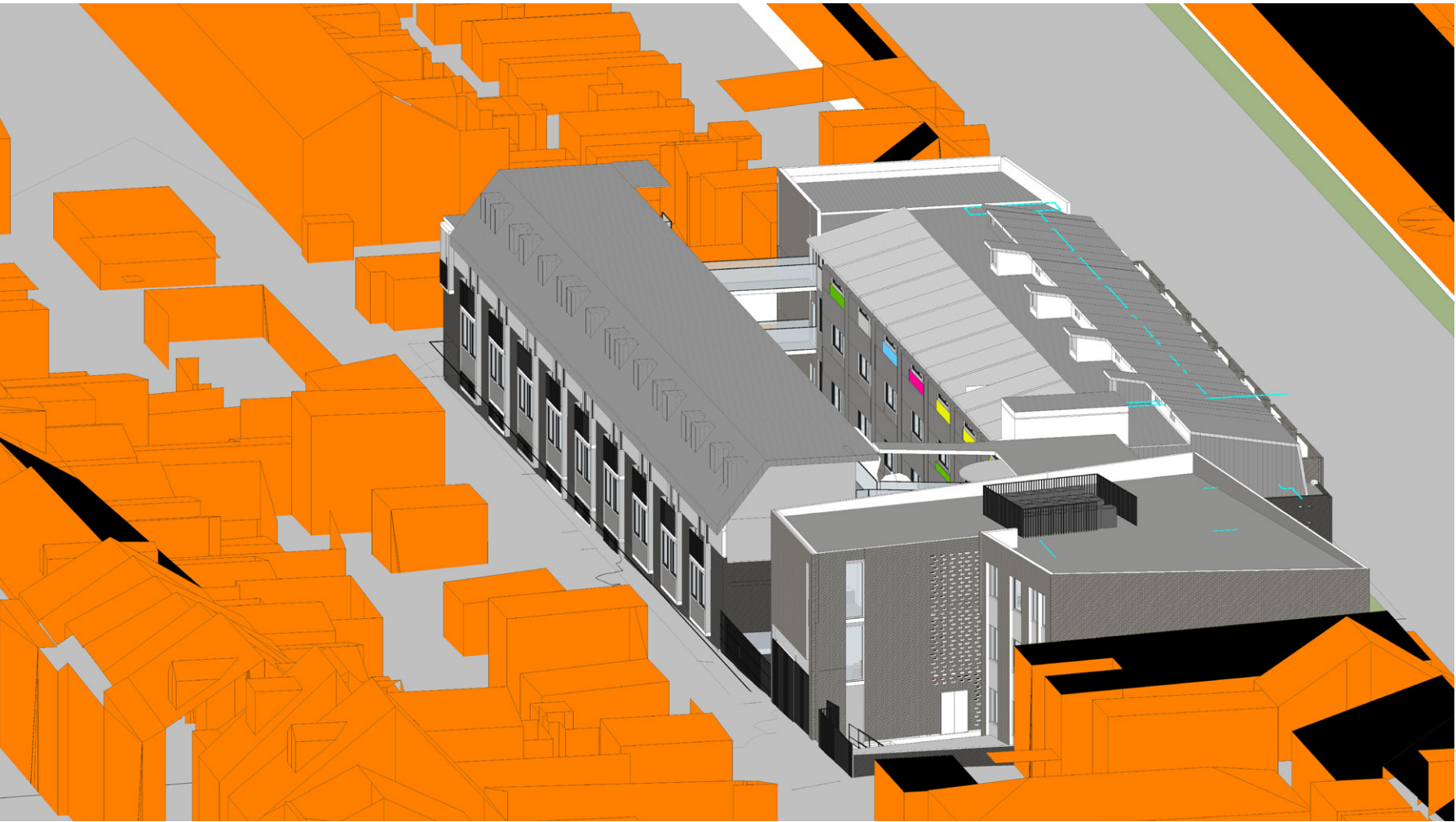
8. MODEL VIEWS

8. MODEL VIEWS

VIEW 1



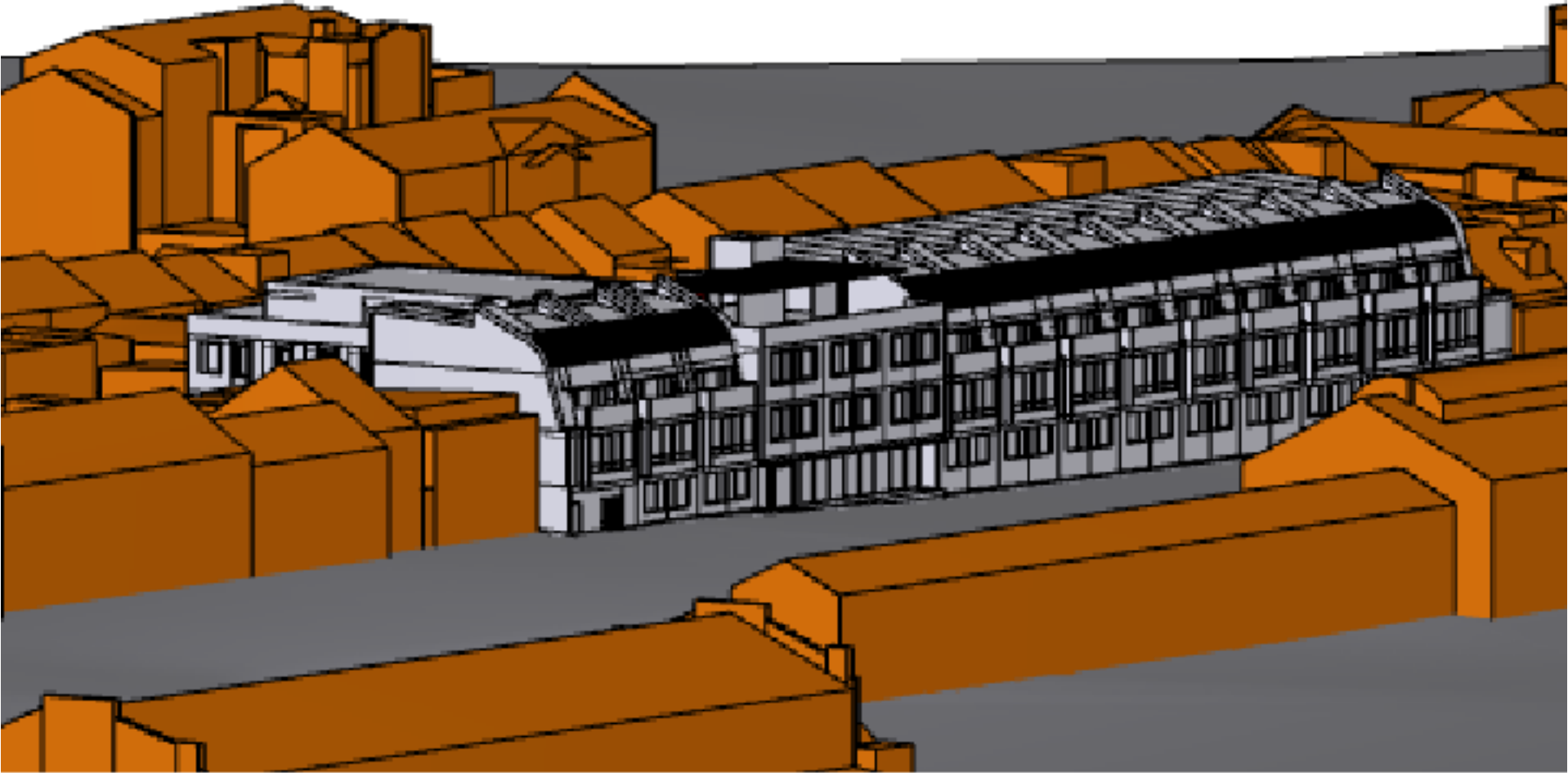
3D Image of original DA submission, provided by Council



3D Image of current proposal

The view is taken from the 3D drafting model and is for information only. The colours are not representative of the material expression of the proposal - this can be seen in the elevations and rendered views. The views provided reflect those provided by Council but are not representative of how the building will be experienced when complete.

3D Image of original DA submission, provided by Council



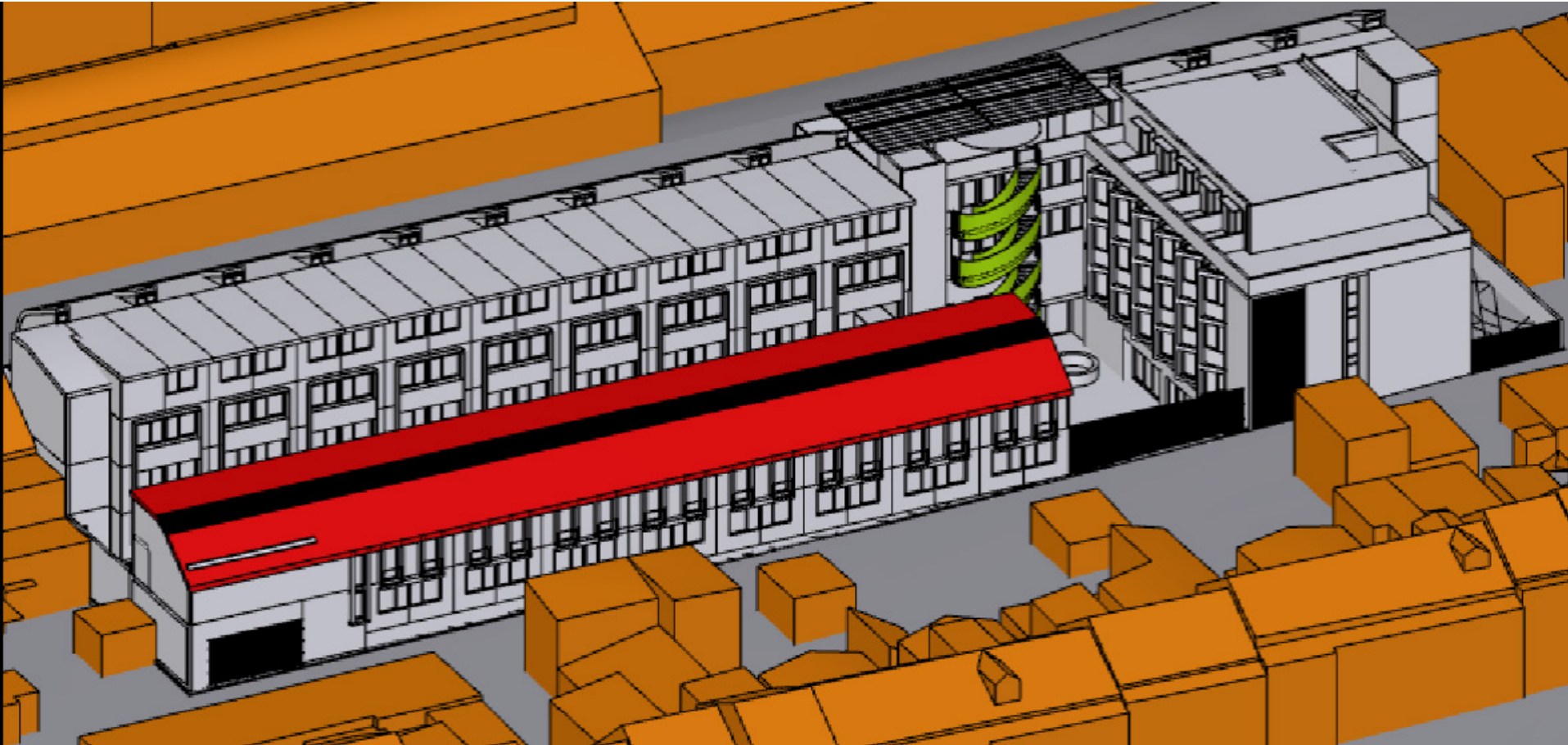
3D Image of current proposal



The view is taken from the 3D drafting model and is for information only. The colours are not representative of the material expression of the proposal - this can be seen in the elevations and rendered views. The views provided reflect those provided by Council but are not representative of how the building will be experienced when complete.

8. MODEL VIEWS

VIEW 3



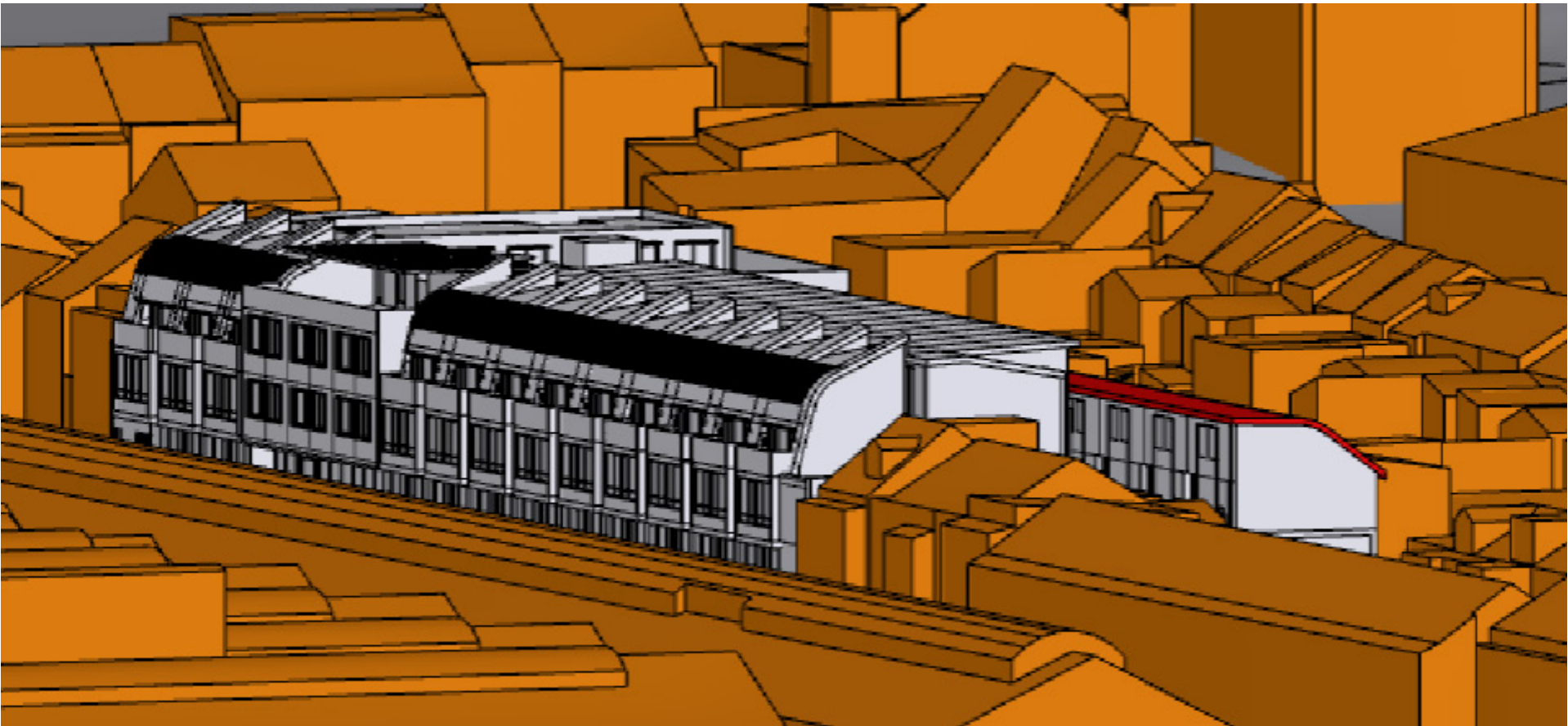
3D Image of original DA submission, provided by Council



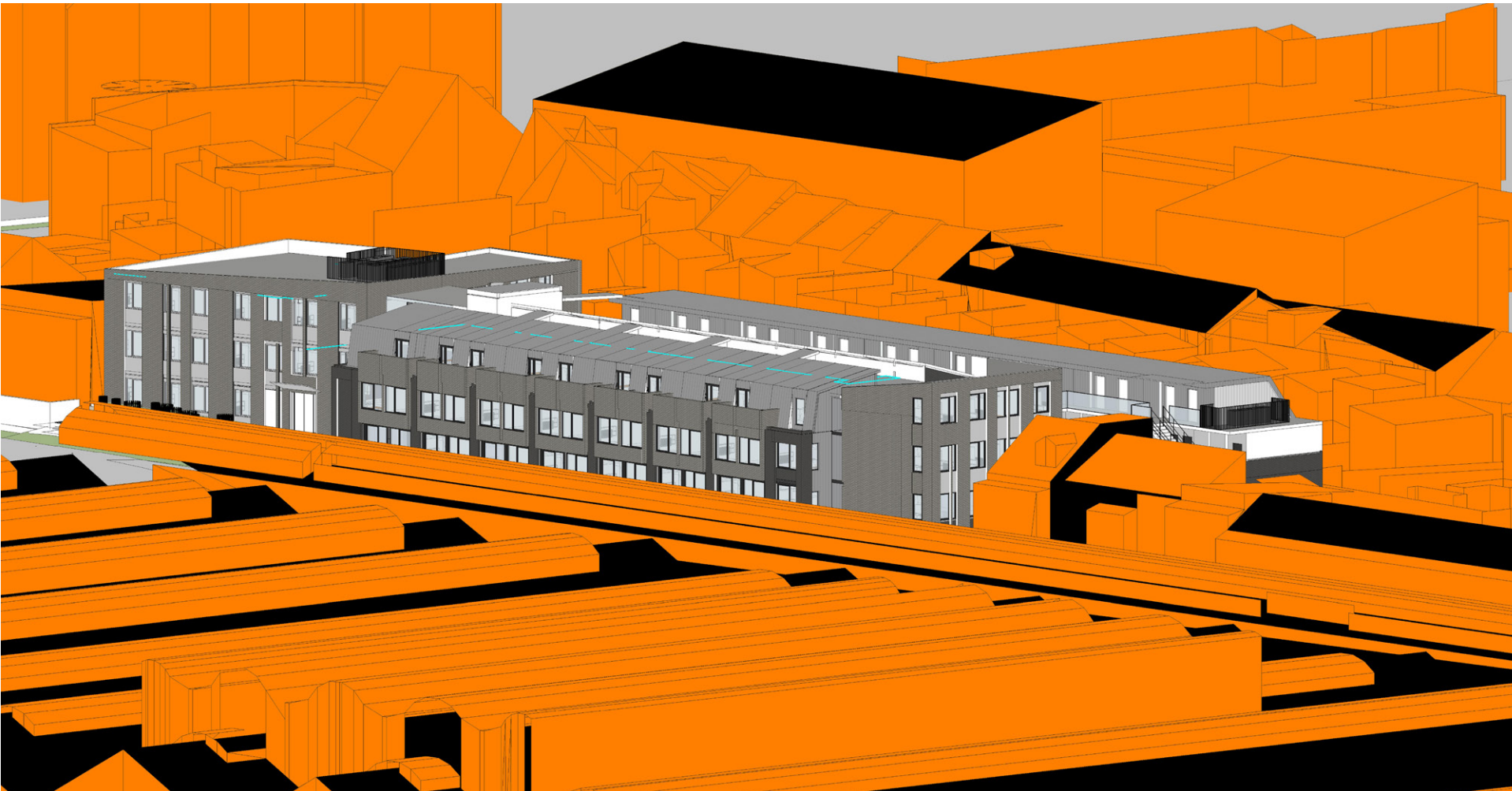
3D Image of current proposal

The view is taken from the 3D drafting model and is for information only. The colours are not representative of the material expression of the proposal - this can be seen in the elevations and rendered views. The views provided reflect those provided by Council but are not representative of how the building will be experienced when complete.

3D Image of original DA submission, provided by Council



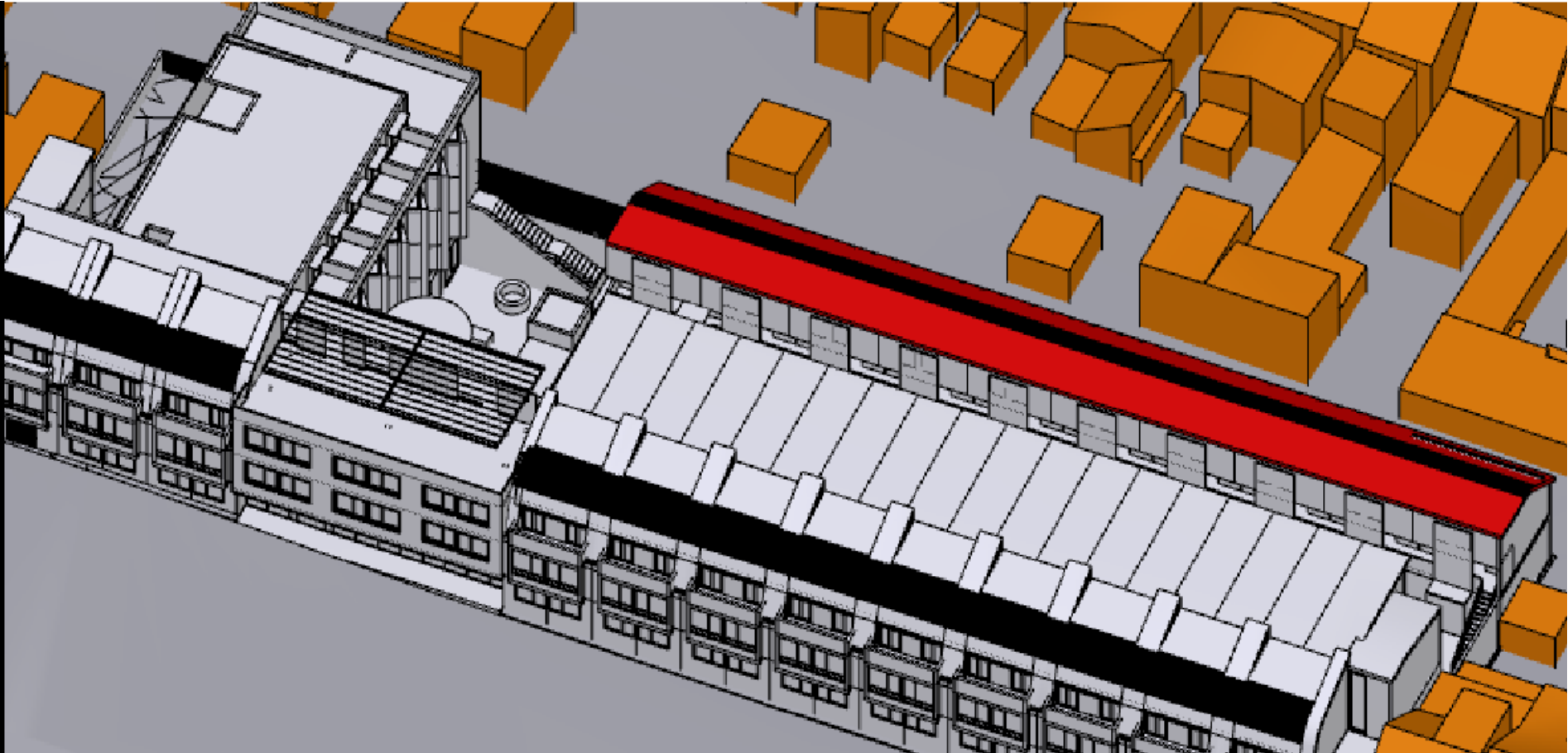
3D Image of current proposal



The view is taken from the 3D drafting model and is for information only. The colours are not representative of the material expression of the proposal - this can be seen in the elevations and rendered views. The views provided reflect those provided by Council but are not representative of how the building will be experienced when complete.

8. MODEL VIEWS

VIEW 5



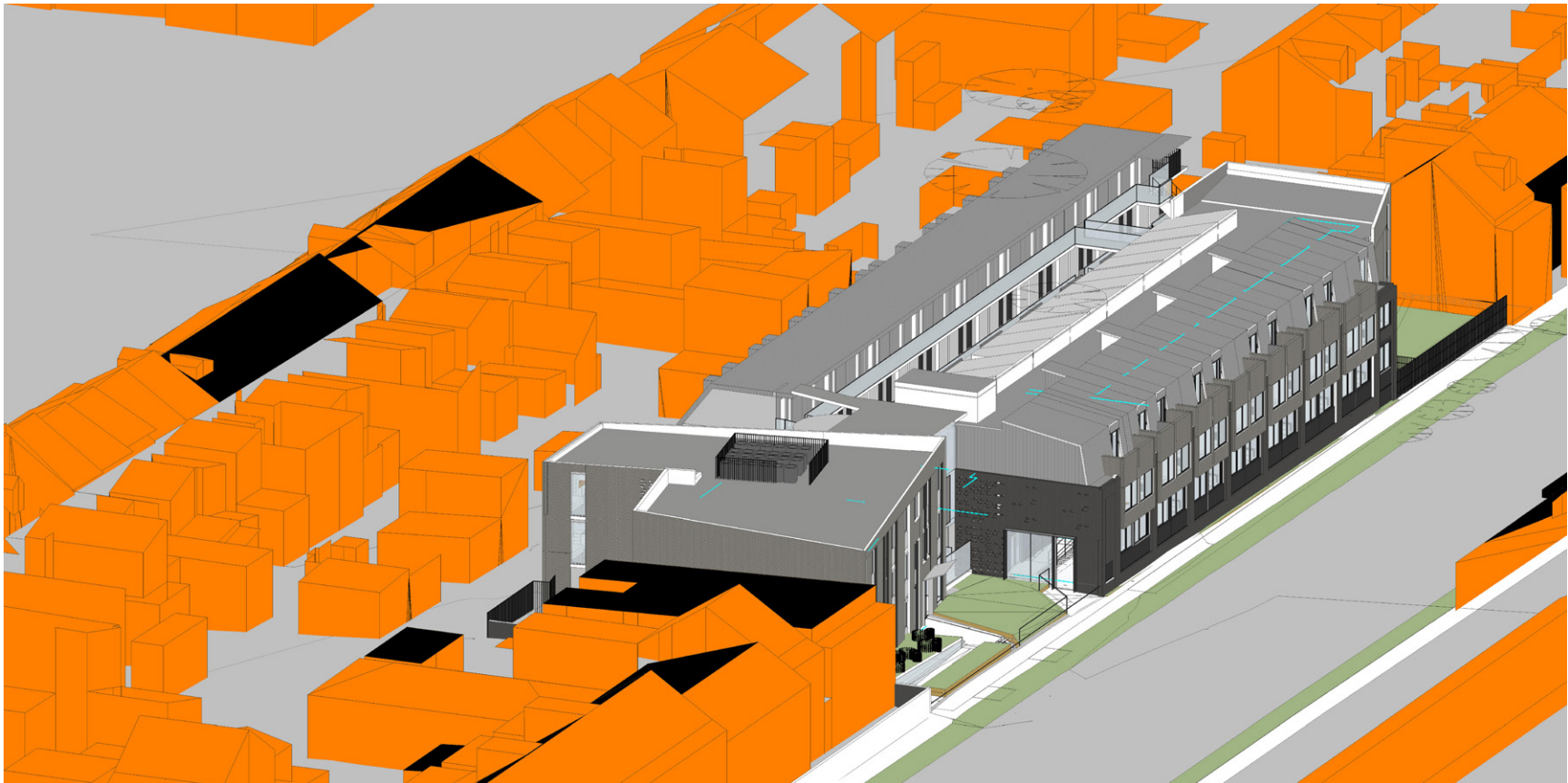
3D Image of original DA submission, provided by Council



3D Image of current proposal

The view is taken from the 3D drafting model and is for information only. The colours are not representative of the material expression of the proposal - this can be seen in the elevations and rendered views. The views provided reflect those provided by Council but are not representative of how the building will be experienced when complete.

3D Image of current proposal



3D Image of current proposal



The view is taken from the 3D drafting model and is for information only. The colours are not representative of the material expression of the proposal - this can be seen in the elevations and rendered views. The views provided reflect those provided by Council but are not representative of how the building will be experienced when complete.